



EMEA Catalogue 2023

Silencers & Accessories





Protecting the environment for future generations by providing engineered solutions that reduce air and noise pollution.



Table of Contents

04 Cylindrical Silencers

06 Disk Silencers

08 Oval Silencers

10 Silencer Accessories

12 Project Notes

14 Why MIRATECH?



CYLINDRICAL SERIES SILENCERS

SCAN TO LEARN
MORE ABOUT
THESE PRODUCTS



STANDARD PRODUCT

- ☐ Cylindrical exhaust silencer on combination of reflection and absorption to provide broadband attenuation of exhaust noise
- ☐ Available without and with brackets for horizontal or vertical installation of any type, such as loose feet, fixed welded feet, mounting brackets and much more.
- ☐ Silencers constructed of mild steel S235JR, optionally available in 16Mo3 high temperature steel, and 304L or 316L stainless steel.
- ☐ Surface treatment such as pickling, black painting rated to 600°C, sandblasting or powder coating possible.
- ☐ Connections:
Loose flanges according to DIN2642
Fixed flanges according to DIN2576

CONFIGURABLE OPTIONS

- ☐ Side inlets and side outlets possible
- ☐ Dual Inlet
- ☐ External insulation for temperature reduction
- ☐ Flange variants DIN86044 and DIN86044-1, DIN2641 or DIN2573 optionally available

CUSTOM OPTIONS

- ☐ Mounting can be implemented according to customer requirements
- ☐ Inlet flanges and/or outlet flanges can be adapted against the standard sizes
- ☐ Flanges according to customer requirements
- ☐ Custom configurations, materials, connections, overall dimensions, etc.

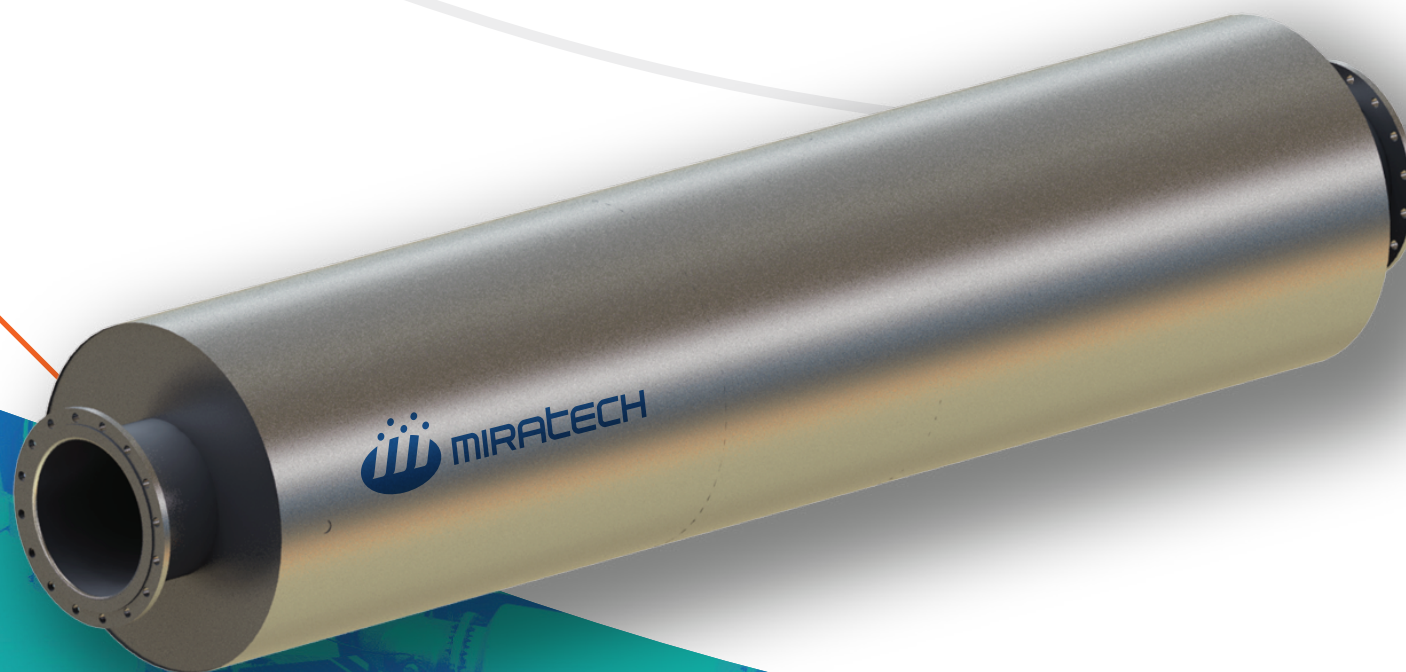
CYLINDRICAL

TYPICAL ATTENUATION RANGE
12 TO 40 DB(A)

This sturdy, robust silencer works well for equipment operating in environments where noise levels are high. Applications include commercial, industrial, mining, etc.



*Connections sizes are according to EU standard.
Dimensions are in millimeter. Weights are in kilos
and are approximate.*



DISK SERIES SILENCERS

SCAN TO LEARN
MORE ABOUT
THESE PRODUCTS



STANDARD PRODUCT

- ☐ Disk exhaust silencer on combination of reflection and absorption to provide broadband attenuation of exhaust noise
- ☐ Bottom, top and no mounting lug options.
- ☐ Silencers constructed of mild steel S235JR, optionally available in 16Mo3 high temperature steel, and 304L or 316L stainless steel.
- ☐ Surface treatment such as pickling, black painting rated to 600°C, sandblasting or powder coating possible.
- ☐ Connections:
Loose flanges according to DIN2642
Fixed flanges according to DIN2576

CONFIGURABLE OPTIONS

- ☐ Side outlet orientation.
- ☐ Bottom inlet location dimensions.
- ☐ Inlet size and connection type and outlet connection type.
- ☐ Dual inlet.
- ☐ Flush mount inlet.

CUSTOM OPTIONS

- ☐ Mounting can be implemented according to customer requirements
- ☐ Inlet flanges and/or outlet flanges can be adapted against the standard sizes
- ☐ Flanges according to customer requirements
- ☐ Custom configurations, materials, connections, overall dimensions, etc.

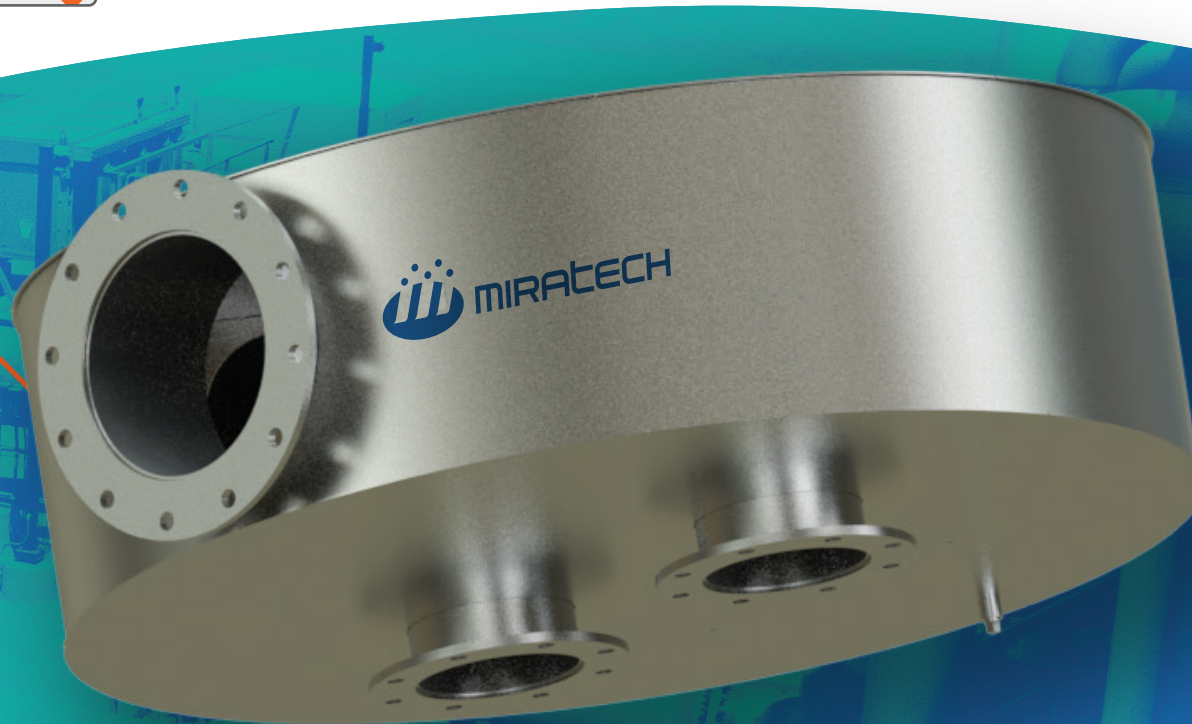
DISK

TYPICAL ATTENUATION RANGE
25 TO 43 DB(A)

This disk silencer is designed for equipment operating in relatively quiet environments that require a high level of silencing. Its low profile lends itself towards projects with space limitations. Applications include stationary, marine, mobile, etc.



*Connections sizes are according to EU standard.
Dimensions are in millimeter. Weights are in kilos
and are approximate.*



OVAL SERIES SILENCERS

SCAN TO LEARN
MORE ABOUT
THESE PRODUCTS



STANDARD PRODUCT

- ☐ Low profile oval exhaust silencer on combination of reflection and absorption to provide broadband attenuation of exhaust noise
- ☐ Bottom, top and no mounting lug options.
- ☐ Silencers constructed of mild steel S235JR, optionally available in 16Mo3 high temperature steel, and 304L or 316L stainless steel.
- ☐ Surface treatment such as pickling, black painting rated to 600°C, sandblasting or powder coating possible.
- ☐ Connections:
Loose flanges according to DIN2642
Fixed flanges according to DIN2576

CONFIGURABLE OPTIONS

- ☐ Side outlet orientation.
- ☐ Bottom inlet and top outlet dimensions.
- ☐ Inlet size and connection type and outlet connection type.
- ☐ Dual inlet.
- ☐ Flush mount inlet.

CUSTOM OPTIONS

- ☐ Mounting can be implemented according to customer requirements
- ☐ Inlet flanges and/or outlet flanges can be adapted against the standard sizes
- ☐ Flanges according to customer requirements
- ☐ Custom configurations, materials, connections, overall dimensions, etc.

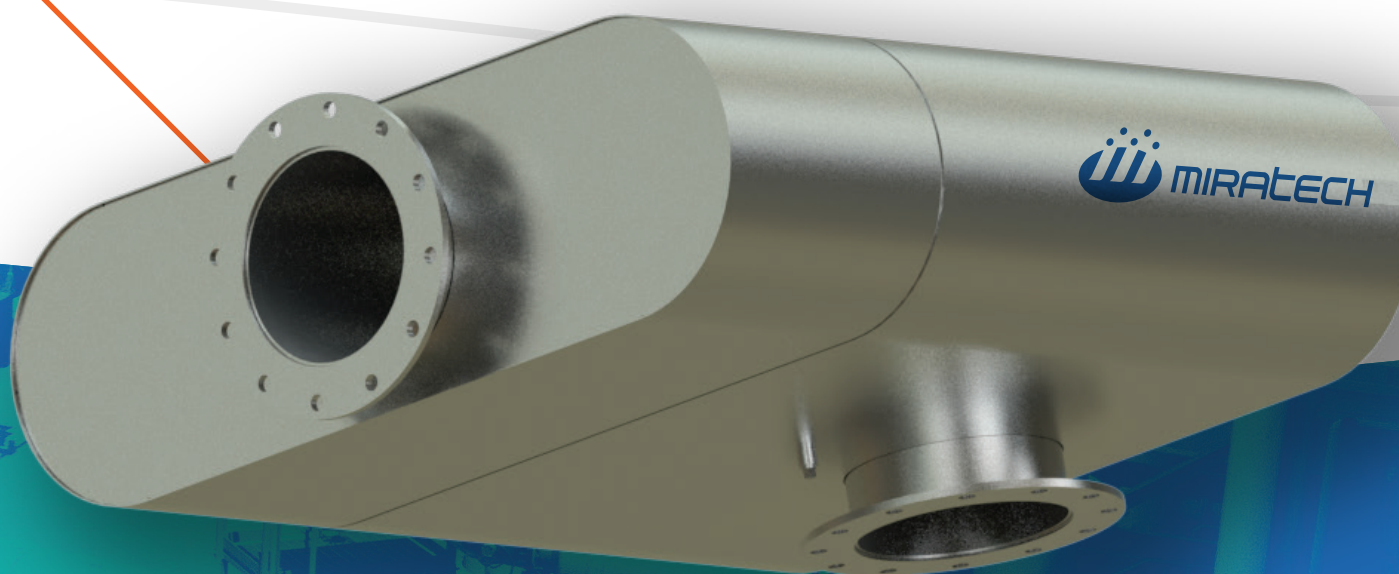
OVAL

TYPICAL ATTENUATION RANGE
28 TO 52 DB(A)

This oval silencer is designed for equipment operating in relatively quiet environments. The unique oval design gives the silencer a low profile while maintaining the volume necessary for a high degree of attenuation. It is ideally suited for space limited applications: stationary, marine, mobile, etc.



*Connections sizes are according to EU standard.
Dimensions are in millimeter. Weights are in kilos
and are approximate.*



ACCESSORIES

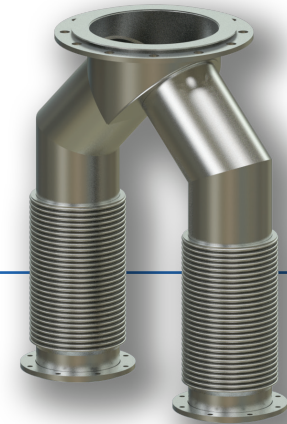
SCAN TO LEARN
MORE ABOUT
THESE PRODUCTS



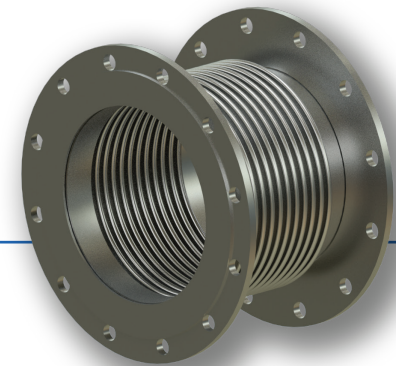
MIRATECH has all of the accessories you need to complete or service your exhaust system.

From specialty connections to simple rain caps, we have you covered.

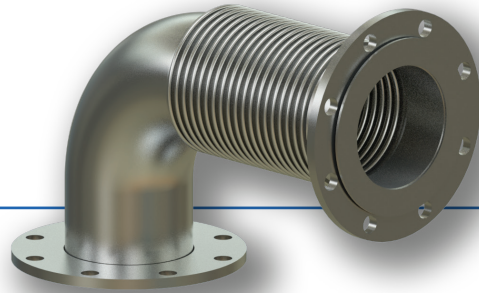
WYE CONNECTION



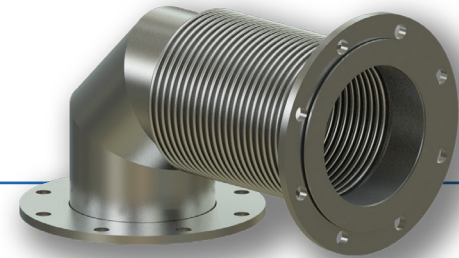
FLEX CONNECTIONS



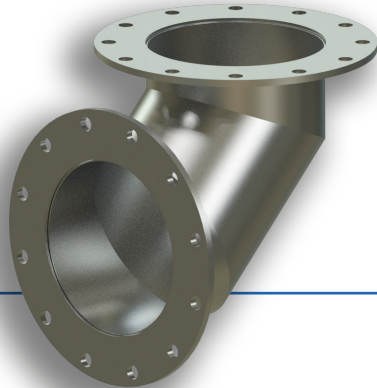
ELBOW FLEX
CONNECTION
SMOOTH



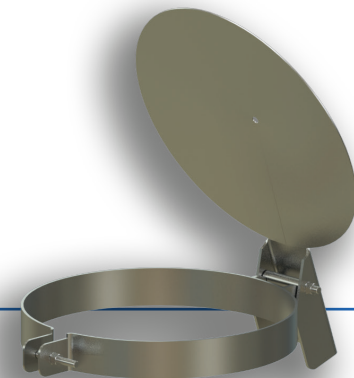
ELBOW FLEX
CONNECTION
SEGMENTED



ELBOWS



RAIN CAPS



PROJECT NOTES

This image shows a single sheet of white paper with horizontal blue ruling lines. The lines are evenly spaced and run across the width of the page. There are no margins, text, or other markings on the paper.

Why MIRATECH?

We offer fully custom emissions systems that deliver an end-to-end solution and provide a complete customer service experience.





Attach Price
Sheet Here

SCAN TO VIEW
THIS BROCHURE
ONLINE.





miratechcorp.eu | +49(0)6664 96110